

WORKSHOP LIGHT

CATALOG NO.	LAMPS	BALLAST	POWER FACTOR	LENGTH	WIDTH	DEPTH	PCS/ CTN	UNIT WT.
224 S-TS	2-20W	Trigger	Low	24	12-1/2	5-7/16	1	10
236 S RS	2-30W	Rapid	High	36	12-1/2	5-7/16	1	16
248 S RS	2-34W	Rapid	High	48	12-1/2	5-7/16	1	17

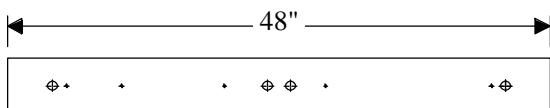
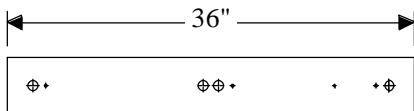
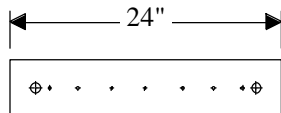
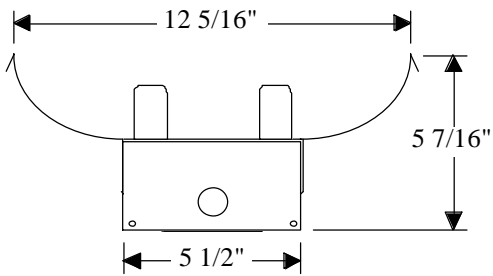
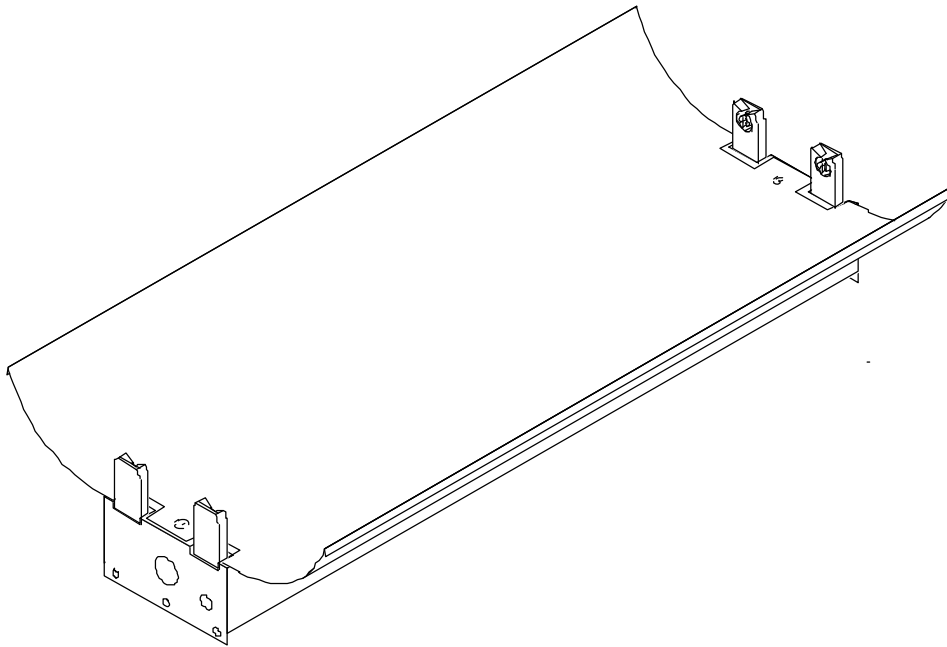
- ⌀ Housing, ends, and reflector are die-formed steel, finished with baked white polyester powder coating.
- ⌀ Solid-top, one-piece reflector standard.
- ⌀ Uplight available with optional aperture reflector.
- ⌀ Surface, pendant, or chain mounting, individual or continuous row installation.
- ⌀ Reflector removes without the use of tools.
- ⌀ For aperture reflectors for industrial fixtures, add suffix--APP.



H Lighting Company, Inc. • St. Louis, Missouri • 314/773-1176 • FAX 314/773-2890

All H & H Lighting Fixtures are completely wired for 118 volts 60 cycle A.C. operation. Ready for installation. All fixtures bear the I.B.E.W., A. F. of L. and Underwriters Laboratories, Inc. labels.

WORKSHOP LIGHTS



MOUNTING - Complete with knockouts for surface mounting or pendant mounting, individually or in continuous rows. Pendant mounting accessories available on specification. Conduit knockouts are supplied on ends and back.

ELECTRICAL - Furnished standard with UL listed ballasts, for 120 Volt 60 Hz A.C. operation. Other voltages and accessories available. Fixtures bear the I.B.E.W., A.F. of L., and Underwriters' Laboratories, Inc. labels.

APPLICATION - All industrial fixtures are designed for quick, easy installation either, hanging or flush, individually or continuous rows.

CONSTRUCTION - Wireway and ends die-formed of code gauge steel, finished in automatic bonderizing, rust preventative process, with high reflectivity powder coated baked white enamel. Reflector is removable for easy access to electrical components.