

# SPECIAL PURPOSE SLIMLINE CHANNEL

CATALOG NO.	LAMPS	BALLAST	POWER FACTOR	LENGTH	WIDTH	DEPTH	PCS/CTN	UNIT WT.
4148 SL	1-38W	430 mA	High	48	3-3/4	4-5/8	2	13
4248 SL	2-38W	430 mA	High	48	4-3/4	5	2	14
4172 SL	1-55W	430 mA	High	72	3-3/4	4-5/8	2	18
4272 SL	2-55W	430 mA	High	72	4-3/4	5	2	19
4196 SL	1-75W	430 mA	High	96	3-3/4	4-5/8	2	18
4296 SL	2-60W	430 mA	High	96	4-3/4	5	2	21
4496 SL	4-60W	430 mA	High	96	8-1/4	4-1/4	1	47

## TANDEM SLIMLINE CHANNEL

4196-2 SL	2-60W	430 mA	High	192	4-5/8	3-5/8	1	32
-----------	-------	--------	------	-----	-------	-------	---	----

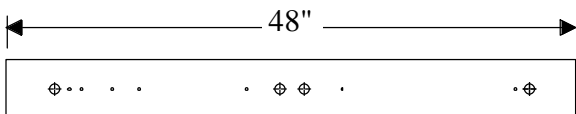
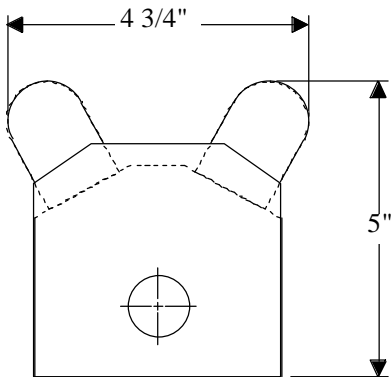
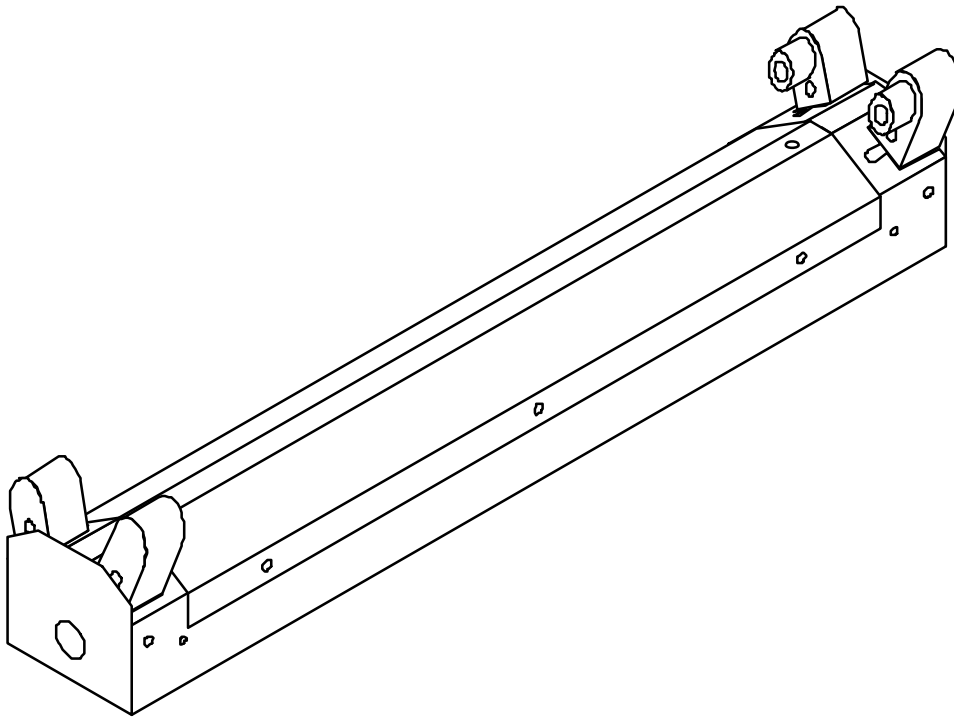
- ⓓ Housing and ends are die-formed steel, finished with baked white polyester powder coating.
- ⓓ High Output (HO) and Very High Output (VHO) models available.
- ⓓ Optional reflectors available.
- ⓓ V- shaped for special applications.

All H & H Lighting Fixtures are completely wired for 118 volts 60 cycle A.C. operation. Ready for installation. All fixtures bear the I.B.E.W., A. F. of L. and Underwriters Laboratories, Inc. labels.



H Lighting Company, Inc. • St. Louis, Missouri • 314/773-1176 • FAX 314/773-2890

# 4200 SL SERIES



**MOUNTING** - Complete with knockouts for surface mounting or pendant mounting, individually or in continuous rows. Pendant mounting accessories available on specification. Conduit knockouts are supplied on ends and back.

**ELECTRICAL** - Furnished standard with UL listed ballasts, for 120 Volt 60 Hz A.C. operation. Other voltages and accessories available. Fixtures bear the I.B.E.W., A.F. of L., and Underwriters' Laboratories, Inc. labels.

**APPLICATION** - All industrial fixtures are designed for quick, easy installation, either hanging or flush, individually or in continuous rows. Heavy duty construction for high vibration areas.

**CONSTRUCTION** - Wireway and ends die-formed of code gauge steel, finished in automatic bonderizing, rust preventative process, with high reflectivity powder coated baked white enamel. Reflector is removable for easy access to electrical components.