

# 240 RFP

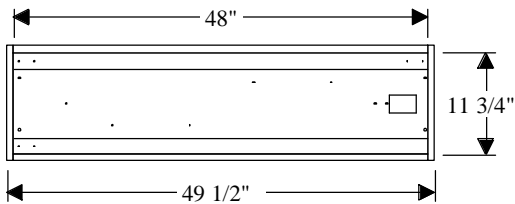
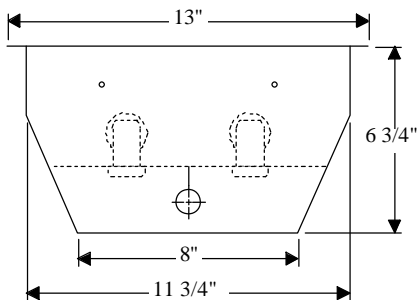
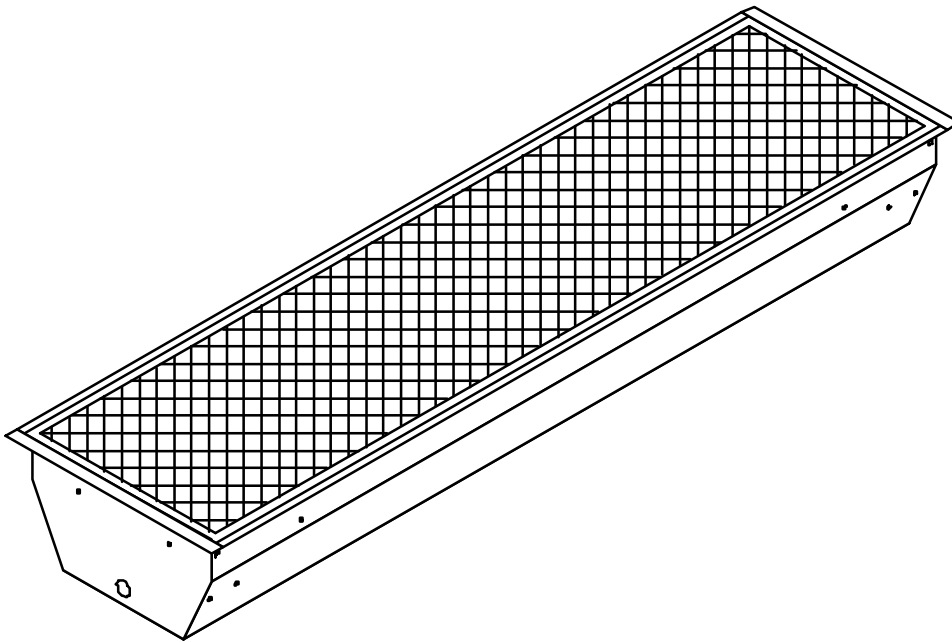
CATALOG NO.	LAMPS	BALLAST	POWER FACTOR	LENGTH	WIDTH	DEPTH	PCS/ CTN	UNIT WT.
220 RFP TS	2-20W	Trigger	Low	24-1/8	11-3/4	6-3/4	1	13
320 RFP TS	3-20W	Trigger	Low	24-1/8	11-3/4	6-3/4	1	17
420 RFP TS	4-20W	Trigger	Low	24-1/8	11-3/4	6-3/4	1	20
240 RFP RS	2-34W	Rapid	High	48-1/8	11-3/4	6-3/4	1	34
340 RFP RS	3-34W	Rapid	High	48-1/8	11-3/4	6-3/4	1	37
440 RFP RS	4-34W	Rapid	High	48-1/8	11-3/4	6-3/4	1	40
272 RFP SL	2-55W	Slimline	High	72-1/8	11-3/4	6-3/4	1	40
296 RFP SL	2-60W	Slimline	High	96-1/8	11-3/4	6-3/4	1	47

- ⓓ Housing, door frame, and wireway are die-formed steel, finished with baked white polyester powder coating.
- ⓓ Frame is hinged on one side, rotary-action cam latch on opposite side.
- ⓓ Removable end trim allows for unit or row installation.
- ⓓ Inside components removable without the use of tools.
- ⓓ Adequate knockouts for normal installation methods.
- ⓓ Standard diffuser is Pattern 12 Prismatic acrylic.
- ⓓ Plaster frames and saddle straps optional.

All H & H Lighting Fixtures are completely wired for 118 volts 60 cycle A.C. operation. Ready for installation. All fixtures bear the I.B.E.W., A. F. of L. and Underwriters Laboratories labels.



# 240 RFP



**MOUNTING** - Complete with knockouts for mounting individually or in continuous rows. Conduit knockouts are supplied on ends and back.

**ELECTRICAL** - Furnished standard with UL listed ballasts, for 120 Volt 60 Hz A.C. operation. Other voltages and accessories available. Fixtures bear the I.B.E.W., A.F. of L., and Underwriters' Laboratories, Inc. labels.

**APPLICATION** - An ideal silhouette unit for all limited depth mounting areas with cornices and valances.

**CONSTRUCTION** - Wireway and ends die-formed of code gauge steel, finished in automatic bonderizing, rust preventative process, with high reflectivity powder coated baked white enamel. Reflector is removable for easy access to electrical components.