

MINIATURE STRIP

CATALOG NO.	LAMPS	BALLAST	POWER FACTOR	LENGTH	WIDTH	DEPTH	PCS/CTN	UNIT WT.
M4	1-4W	Preheat	Low	9	1-3/8	2	6	2
M6	1-6W	Preheat	Low	12	1-3/8	2	6	2
M8	1-8W	Preheat	Low	15	1-3/8	2	6	2
M15	1-15W	Preheat	Low	21	1-3/8	2-9/16	6	3
M15-2	2-15W	Preheat	Low	40-5/8	1-3/8	2-9/16	6	7

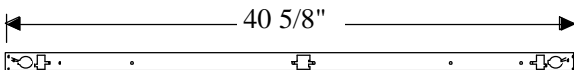
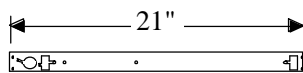
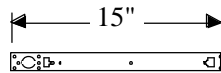
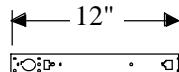
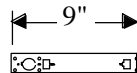
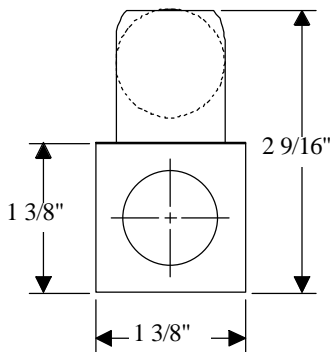
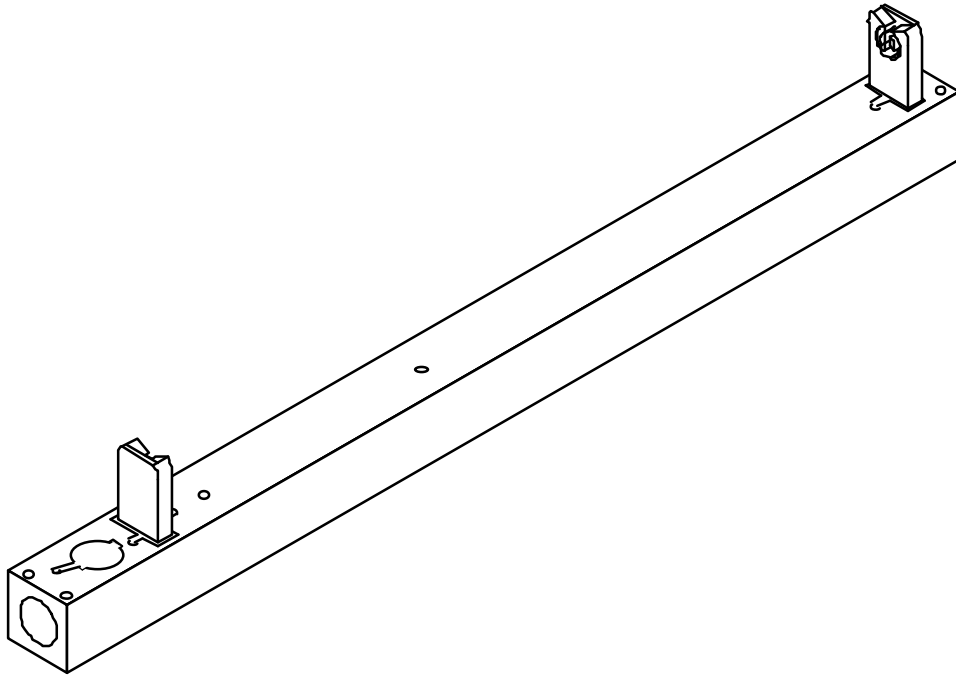
- ⓓ Housing and ends are die-formed steel, finished with baked white polyester powder coating.
- ⓓ Shallow 1-3/8" depth is ideal anywhere that space is a problem.
- ⓓ Preheat lamp application.
- ⓓ Individual or row installation.



H Lighting Company, Inc. • St. Louis, Missouri • 314/773-1176 • FAX 314/773-2890

All H & H Lighting Fixtures are completely wired for 118 volts 60 cycle A.C. operation. Ready for installation. All fixtures bear the I.B.E.W., A. F. of L. and Underwriters Laboratories labels.

MINIATURE SERIES



MOUNTING - Complete with knockouts for surface mounting or pendant mounting, individually or in continuous rows. Conduit knockouts are supplied on ends.

ELECTRICAL - Furnished standard with UL listed ballasts, for 120 Volt 60 Hz A.C. operation. Other voltages and accessories available. Fixtures bear the I.B.E.W., A.F. of L., and Underwriters' Laboratories, Inc. labels.

APPLICATION - An ideal low silhouette unit for all limited depth mounting areas with cornices and valances, wall cases, displays, and many under-cabinet locations.

CONSTRUCTION - Wireway and ends die-formed of code gauge steel, finished in automatic bonderizing, rust preventative process, with high reflectivity baked white enamel.