

LOUVERED INDUSTRIAL FIXTURE

CATALOG NO.	LAMPS	BALLAST	POWER FACTOR	LENGTH	WIDTH	DEPTH	PCS/CTN	UNIT WT.
LI 5248 RS	2-34W	Rapid	High	48	12-1/2	9	1	24
LI 5272 SL	2-55W	Slimline	High	72	12-1/2	9	1	37
LI 5296 SL	2-60W	Slimline	High	96	12-1/2	9	1	42

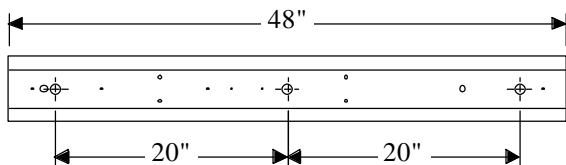
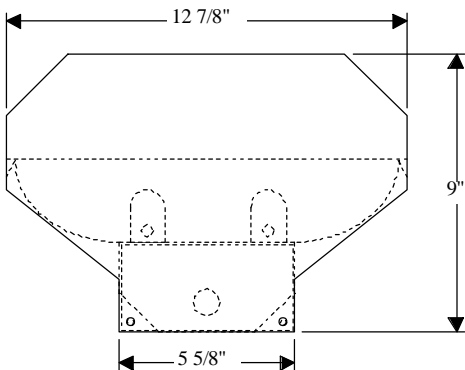
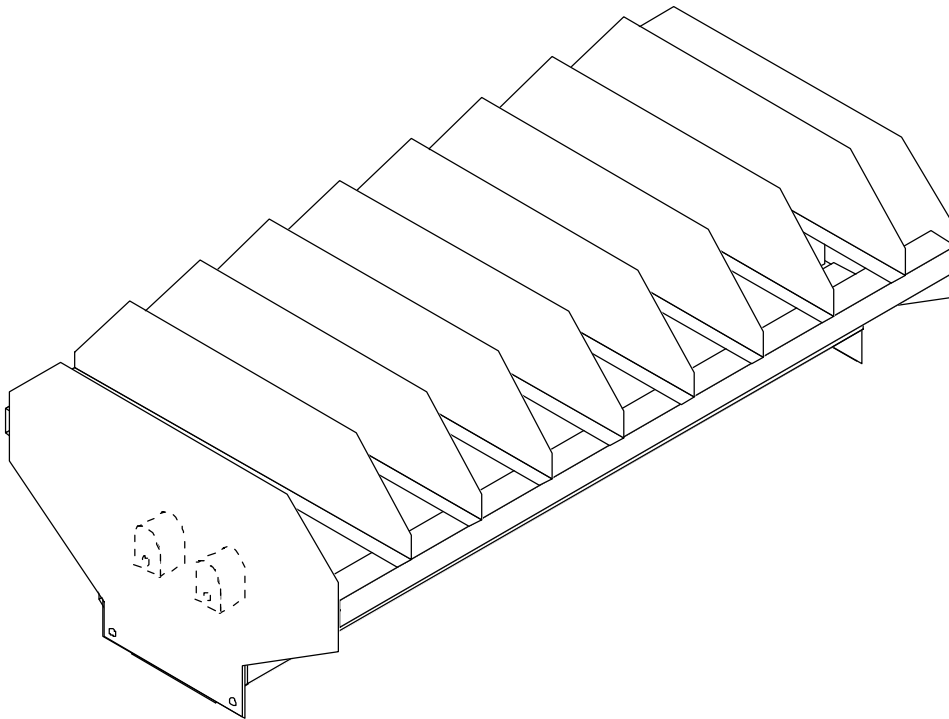
- ⓓ Housing, reflectors, and louvers are die-formed steel, finished with baked white polyester powder coating.
- ⓓ Solid top, one and two piece reflector standard.
- ⓓ Rapid Start (RS), Slimline (SL), High Output (HO) or Very High Output (VHO) available.
- ⓓ Surface, pendant or chain mounting, aircraft cable, unit or row installation.
- ⓓ Louvers removable without the use of tools.
- ⓓ Reflector removes without the use of tools.
- ⓓ Special "hidden" aircraft cable hanging system available upon request.
- ⓓ Additional lengths available on request.



H Lighting Company, Inc. • St. Louis, Missouri • 314/773-1176 • FAX 314/773-2890

All H & H Lighting Fixtures are completely wired for 118 volts 60 cycle A.C. operation. Ready for installation. All fixtures bear the I.B.E.W., A. F. of L. and Underwriters Laboratories labels.

LOUVERED INDUSTRIAL



MOUNTING - Complete with knockouts for surface mounting or pendant mounting, individually or in continuous rows. Pendant mounting accessories available on specification. Conduit knockouts are supplied on ends and back.

ELECTRICAL - Furnished standard with UL listed ballasts, for 120 Volt 60 Hz A.C. operation. Other voltages and accessories available. Fixtures bear the I.B.E.W., A.F. of L., and Underwriters' Laboratories, Inc. labels.

APPLICATION - All industrial fixtures are designed for quick, easy installation either, hanging or flush, individually or continuous rows.

CONSTRUCTION - Wireway and ends die-formed of code gauge steel, finished in automatic bonderizing, rust preventative process, with high reflectivity powder coated baked white enamel. Reflector is removable for easy access to electrical components.